

Buckinghamshire's claimant count, January 2018

21 February 2018

Buckinghamshire's claimant count rose by 110 in January to stand at 2,975 or 0.9 per cent of working age residents, the 3rd lowest rate among the 38 Local Enterprise Partnerships and 4th lowest among England's 27 county council areas. The annual rate of growth of claimants in Buckinghamshire fell to 5.9 per cent in January, the lowest it has been since October 2016 and the first time it has fallen below the national rate of increase since September 2016.

Table 1: Claimant Count, January 2018

	No.	%	Rank	Annual Change
Aylesbury Vale	1,020	0.8	39 of 380	6.8
Chiltern	420	0.8	39 of 380	10.5
South Bucks	275	0.7	20 of 380	-5.2
Wycombe	1,260	1.2	117 of 380	5.9
Buckinghamshire	2,975	0.9	4 of 27	5.9
BTVLEP	2,975	0.9	3 of 38	5.9
Coast to Capital	19,910	1.6	20 of 38	17.6
Enterprise M3	6,640	0.7	1 of 38	10.5
Hertfordshire	8,460	1.1	7 of 38	7.0
London	121,880	2.0	27 of 38	8.9
Oxfordshire	3,130	0.7	1 of 38	17.2
SEMLEP	18,355	1.5	17 of 38	14.2
TV Berkshire	5,285	0.9	3 of 38	-5.3
South East	69,475	1.2	1 of 12	8.0
Great Britain	797,525	2.0	-	7.3

Source: DWP, 2018

The number of Job Seekers' Allowance claimants looking for work in managerial, professional and technical occupations fell to 190 in January having stood at 1,180 at the start of 2012. The share of JSA claimants looking for work in these roles is now 8.9 per cent in Buckinghamshire, having been more than double (at 18.3 per cent) at the start of 2012. In contrast, while the number of claimants looking for work in sales occupations is almost unchanged, the share of all claimants stood at 66.6 per cent (1,425 people) in January, having been less than a quarter (22.8 per cent) in January 2012.

There were 5,271 advertised job openings in Buckinghamshire in January, down 15.5 per cent from the 6,238 recorded in January 2017. The number of openings fell across the occupational structure, as shown in chart 6 below, with sales occupations seeing the largest falls both relatively and absolute. There are now 1.8 openings per claimant in Buckinghamshire, compared to 0.7 across the UK.

The most commonly advertised roles in January were sales related occupations, including retail sales representatives with 205 openings, ahead of nurses (191), programmers and software development professionals (182), secondary school teaching professionals (146), *other* administrative occupations (including administration assistants and clerks, 127), marketing and sales directors (122), and *other* customer service occupations (122).

In the last year the most sought *specialised* skills were customer service (7,403 openings), team work and collaboration (6,213), sales (5,807), teaching (4,968), budgeting (4,445), project management (3,657), and accounting (2,965). The most sought *baseline* skills were communication skills (15,762), ahead of organisational skills (7,127), Microsoft Excel (5,648), planning (5,553), being detail orientated (5,296), Microsoft Office (3,714), creativity (3,655), and problem solving (3,538).

Chart 1: Buckinghamshire's claimant count over time, to January 2018



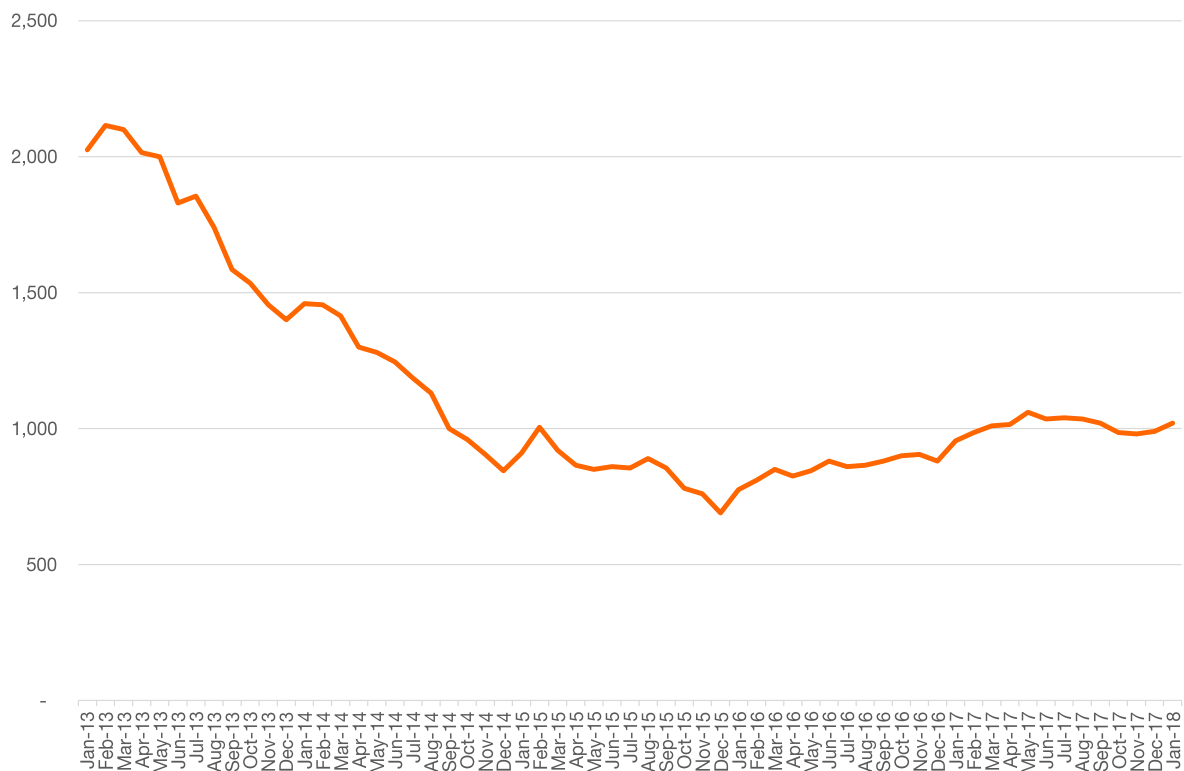
Source: DWP, 2018

Table 2: Claimant count by age group, January 2018

	18-24			25-49			50+		
	No	%	Rank	No	%	Rank	No	%	Rank
Aylesbury Vale	145	1.0	30	545	0.8	61	330	0.9	88
Chiltern	85	1.5	94	195	0.7	32	140	0.7	52
South Bucks	45	1.0	31	140	0.7	20	90	0.6	28
Wycombe	210	1.5	95	680	1.2	121	360	1.1	139
Buckinghamshire	485	1.3	4	1,565	0.9	5	920	0.9	9
BTVLEP	485	1.3	4	1,565	0.9	3	920	0.9	4
Enterprise M3	1,060	0.8	2	3,425	0.6	1	2,145	0.7	1
Hertfordshire	1,365	1.5	6	4,445	1.1	6	2,640	1.2	15
London	17,735	2.3	18	67,110	1.8	24	36,795	2.7	35
Oxfordshire	475	0.7	1	1,700	0.7	2	945	0.8	2
South East Midlands	3,020	2.0	13	9,895	1.4	12	5,410	1.5	22
Thames Valley Berkshire	710	1.0	3	2,905	0.9	4	1,660	1.0	6
South East	12,770	1.7	1	36,165	1.2	1	20,380	1.2	2
Great Britain	153,155	2.7	-	431,155	2.0	-	211,455	1.8	-

Source: DWP, 2018

Chart 2: Aylesbury Vale's claimant count over time, to January 2018



Source: DWP, 2018

Chart 3: Chiltern's claimant count over time, to January 2018



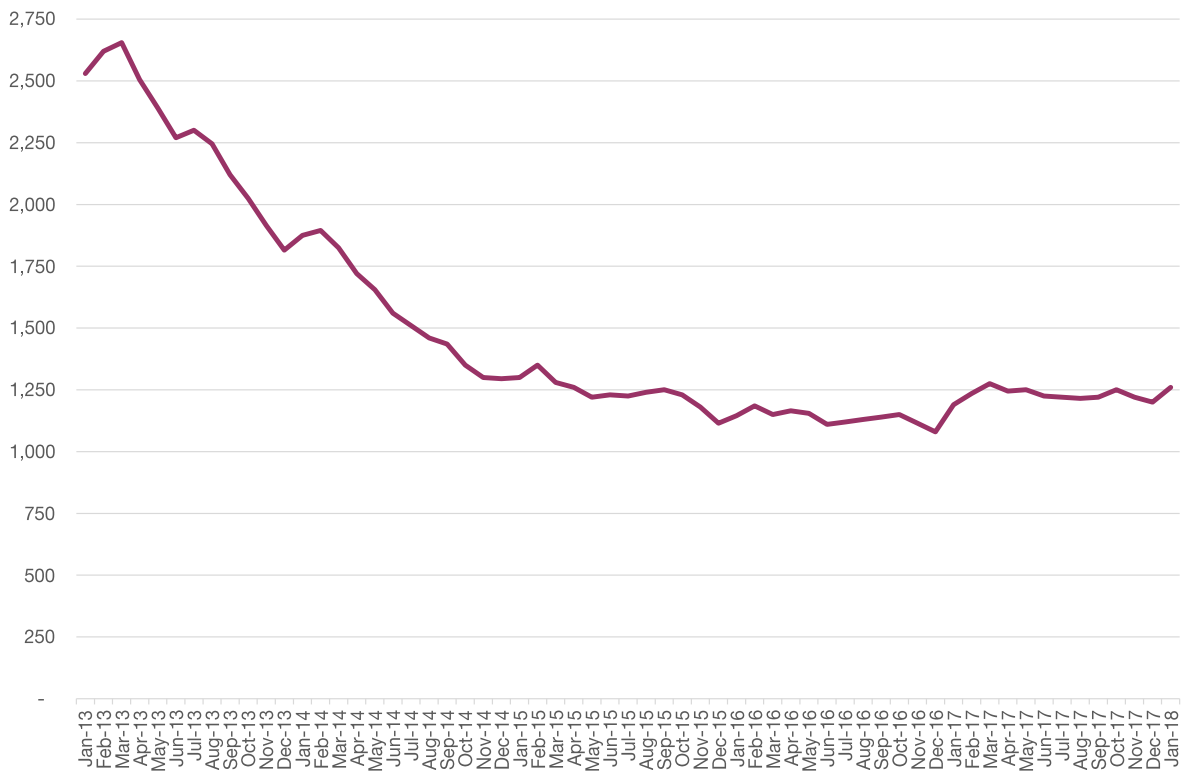
Source: DWP, 2018

Chart 4: South Bucks' claimant count over time, to January 2018



Source: DWP, 2018

Chart 5: Wycombe's claimant count over time, to January 2018



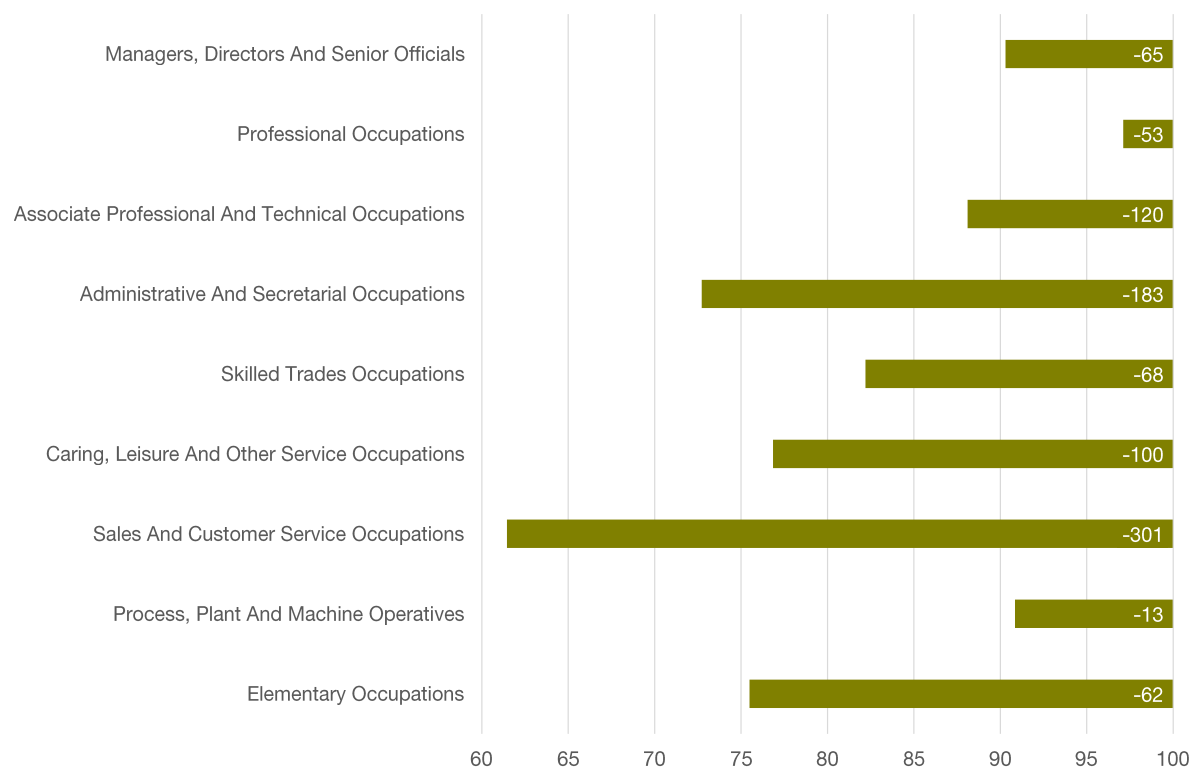
Source: DWP, 2018

Table 3: Claimant count by sought occupation (JSA only), January 2018

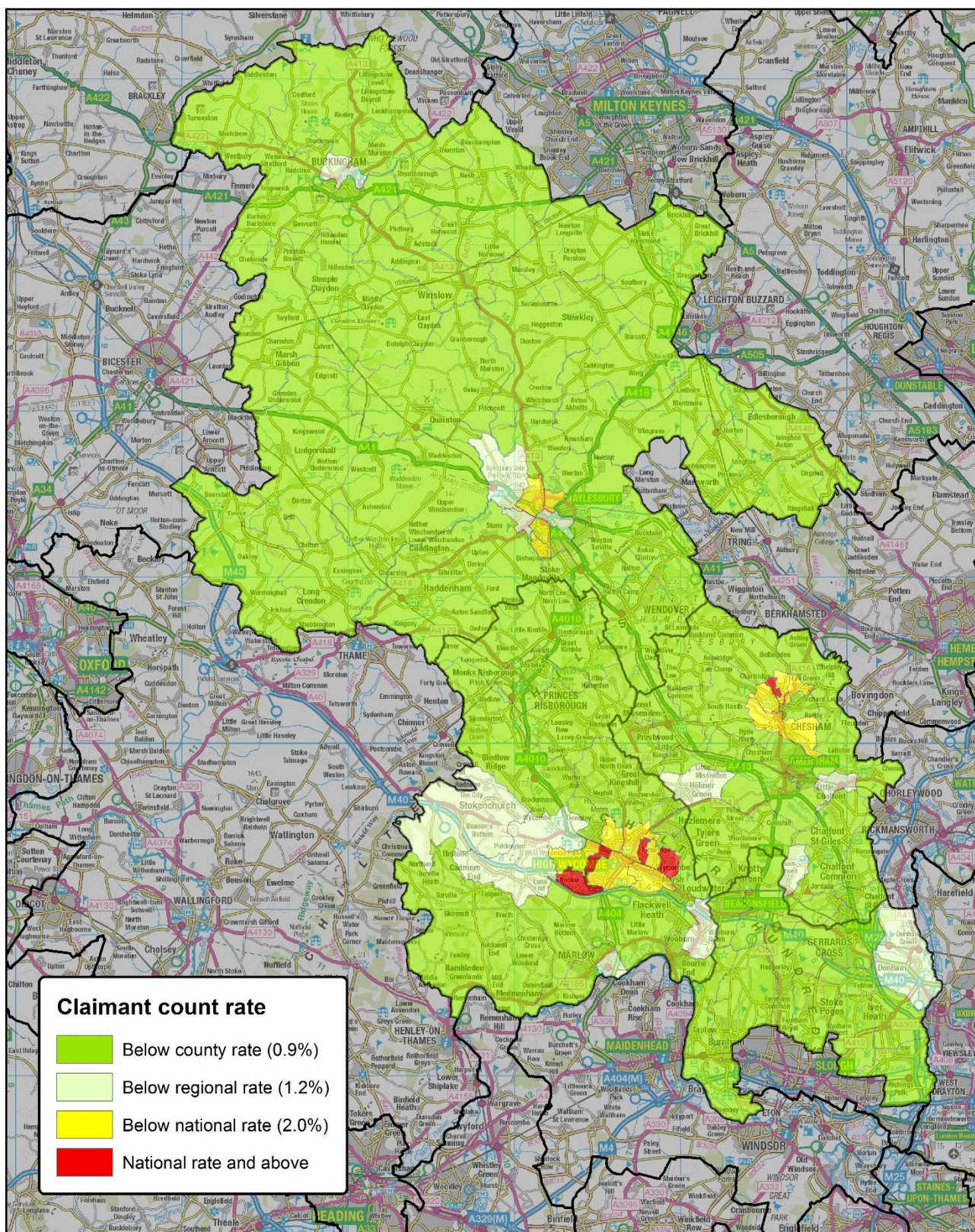
	SOCs 1-3			SOC 7 - Sales			SOC 9 - Elementary		
	No.	%	Rank	No.	%	Rank	No.	%	Rank
Aylesbury Vale	50	6.5	248	525	68.6	90	65	8.5	227
Chiltern	30	10.2	129	190	64.4	163	20	6.8	292
South Bucks	25	13.2	81	120	63.2	189	10	5.3	335
Wycombe	90	9.9	133	590	64.8	153	75	8.2	238
Buckinghamshire	190	8.9	10	1,425	66.6	11	165	7.7	21
BTVLEP	190	8.9	16	1,425	66.6	16	165	7.7	32
Coast to Capital	595	7.4	23	5,600	69.3	9	465	5.8	36
Enterprise M3	590	12.7	6	2,850	61.6	24	265	5.7	37
Hertfordshire	265	4.8	33	3,360	61.1	27	590	10.7	18
London	7,195	10.6	12	45,490	67.1	14	5,360	7.9	29
Oxfordshire	145	10.0	14	965	66.6	17	110	7.6	33
South East Midlands	700	6.5	28	6,805	63.4	20	1,425	13.3	11
Thames Valley Berkshire	305	8.3	18	2,010	54.8	34	315	8.6	27
South East	4,535	11.3	4	25,175	62.6	6	3,365	8.4	10
Great Britain	41,485	9.7		272,095	63.4		50,255	11.7	

Source: DWP, 2018

Chart 6: Annual change in job openings in Buckinghamshire (Jan 2017=100)



Source: Labour Insight, 2018



**Buckinghamshire Claimant Count Rate (JSA & Universal Credit) by Ward
January 2018**

This map is reproduced from Ordnance Survey material with the permission of Ordnance Survey on behalf of the controller of Her Majesty's Stationary Office. Crown Copyright. Unauthorised reproduction infringes Crown Copyright and may lead to prosecution or civil proceedings.
© Copyright Buckinghamshire County Council Licence No. 100021529 2010

Imagery © GeoPerspectives.com



Produced by BBF
21 February 2018

Scale: 1:300,000 at A4



**SUPPORTING
BUSINESSES
IN BUCKINGHAMSHIRE**



**YOUR LOCAL
GROWTH HUB**