

Buckinghamshire's claimant count fell by 55 in September to stand at 3,035, or 0.9 per cent of working age residents. Buckinghamshire has the 3rd lowest claimant count rate among the 27 county council areas, ranking 2nd lowest among the 38 Local Enterprise Partnerships (LEPs). Over the last year Buckinghamshire's claimant count has risen by 4.7 per cent (135 claimants), well below the rises of 17.9 and 17.0 per cent rise recorded across the south east region and Great Britain, to rank 2nd lowest among LEPs.

Table 1: Claimant Count, September 2018

	No.	%	Rank	Annual Change
Aylesbury Vale	1,025	0.8	27 of 380	0.5
Chiltern	435	0.8	27 of 380	11.5
South Bucks	280	0.7	18 of 380	1.8
Wycombe	1,295	1.2	99 of 380	6.1
Buckinghamshire	3,035	0.9	3 of 27	4.7
BTVLEP	3,035	0.9	2 of 38	4.7
Coast to Capital	22,405	1.8	22 of 38	18.8
Enterprise M3	6,615	0.7	1 of 38	5.1
Hertfordshire	9,975	1.3	5 of 38	23.8
London	134,180	2.2	27 of 38	11.0
Oxfordshire	4,920	1.1	3 of 38	66.2
SEMLEP	20,190	1.6	13 of 38	13.6
TV Berkshire	7,180	1.2	4 of 38	33.3
South East	78,455	1.4	1 of 12	17.9
Great Britain	902,765	2.2	-	17.0

Source: DWP, 2018

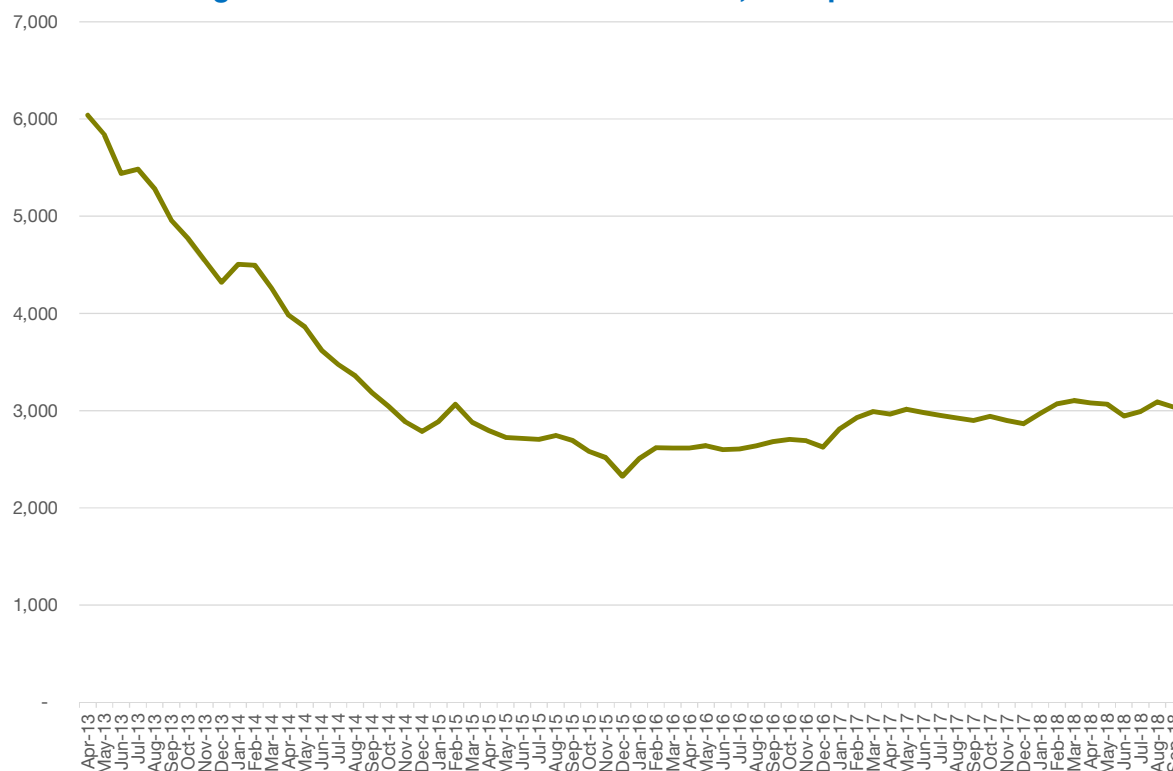
The claimant count rate is below 1.0 per cent in 71 of Buckinghamshire's 98 wards, with four wards having rates above national level. These four wards, Micklefield; Oakridge and Castlefield; and Booker and Cressex in High Wycombe and Ridgeway in Chesham now account for 12.7 per cent of all claimants in Buckinghamshire. The full results are presented in the map at the end of this bulletin.

There were 6,013 advertised job openings in Buckinghamshire in September, the most since April, 3.7 per cent more (217 openings) than in August but 13.6 per cent (740) fewer than in September 2017. In the year to the end of September there were 67,488 job vacancies posted in Buckinghamshire, 2.4 per cent (1,684 openings) fewer than in the previous year, with professional and technical occupations seeing the largest fall in openings, down 1,569 or 4.9 per cent. Managerial, professional and technical occupations now account for 59.1 per cent of all openings, down from 60.2 per cent in the previous year. The data are presented in chart 6 below. There were 2.0 openings per claimant in Buckinghamshire in September compared to 0.8 across Great Britain.

The roles most commonly advertised in Buckinghamshire in the year to the end of September have been *other* sales occupations (2,862 openings) ahead of programmers and software development professionals (2,523); *other* administrative occupations (2,039); *other customer service occupations* (1,851); nurses (1,834); and *other* managers and proprietors in services (1,679).

Over the last year the *baseline* skills most sought by recruiters in Buckinghamshire have been communication skills and organisational skills sought in 21.8 and 9.5 per cent of openings respectively).

Chart 1: Buckinghamshire's claimant count over time, to September 2018



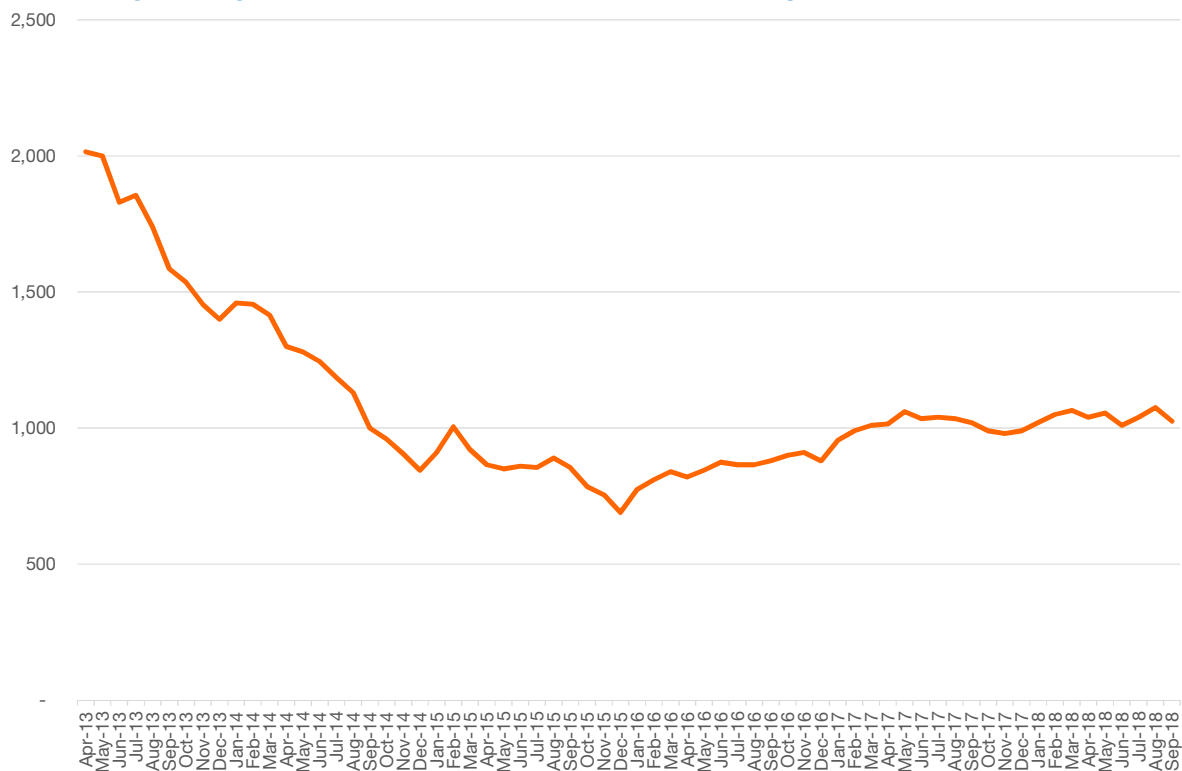
Source: DWP, 2018

Table 2: Claimant count by age group, September 2018

	18-24			25-49			50+		
	No	%	Rank	No	%	Rank	No	%	Rank
Aylesbury Vale	160	1.2	35	550	0.8	43	315	0.8	62
Chiltern	85	1.5	76	195	0.7	22	145	0.7	42
South Bucks	40	0.9	20	150	0.7	21	90	0.6	16
Wycombe	180	1.4	59	695	1.2	109	410	1.3	150
Buckinghamshire	465	1.3	4	1,600	0.9	4	975	0.9	5
BTVLEP	465	1.3	3	1,600	0.9	2	975	0.9	2
Coast to Capital	3,935	2.5	17	12,100	1.8	17	6,315	1.6	24
Enterprise M3	1,120	0.9	1	3,380	0.6	1	2,100	0.6	1
Hertfordshire	1,615	1.8	7	5,295	1.3	6	3,030	1.4	17
London	19,925	2.7	23	73,710	2.0	23	40,385	2.9	35
Oxfordshire	800	1.2	2	2,725	1.2	3	1,385	1.1	4
South East Midlands	3,470	2.4	13	10,955	1.6	11	5,735	1.5	20
Thames Valley Berkshire	1,070	1.5	4	3,920	1.2	4	2,170	1.3	14
South East	14,375	1.9	1	41,160	1.4	1	22,690	1.3	1
Great Britain	172,755	3.1	-	489,575	2.3	-	237,905	2.0	-

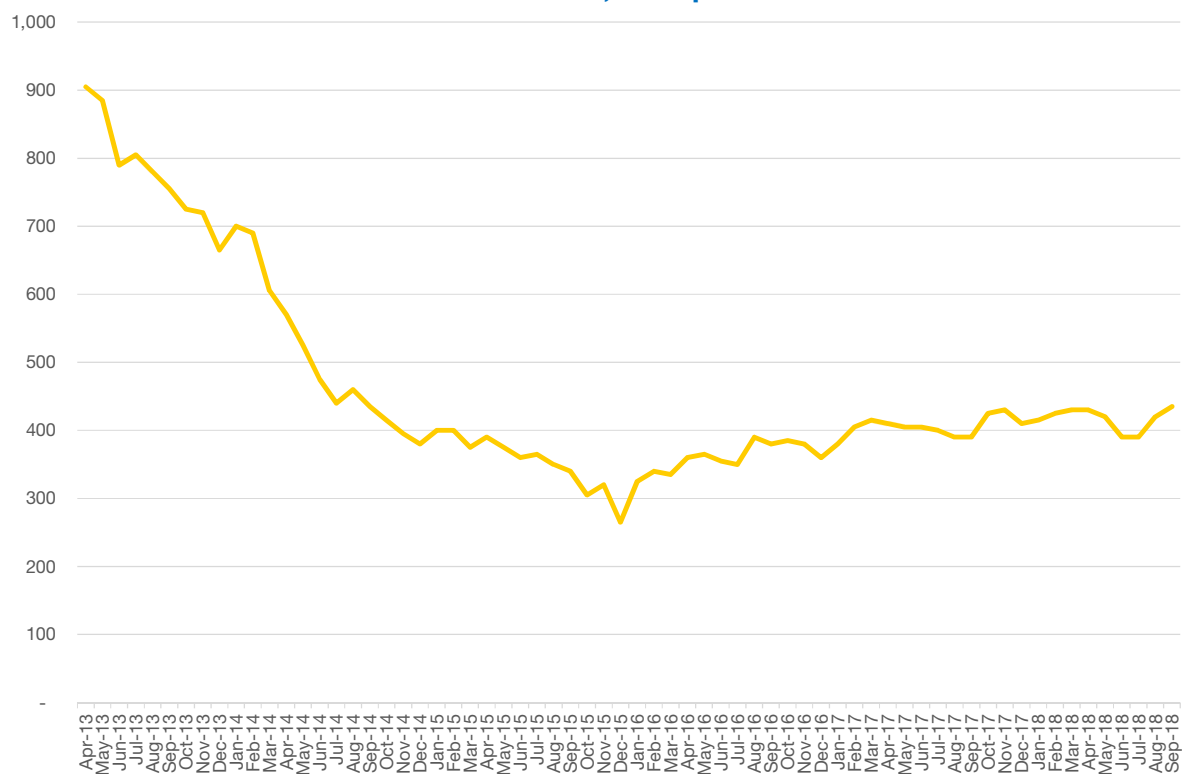
Source: DWP, 2018

Chart 2: Aylesbury Vale's claimant count over time, to September 2018



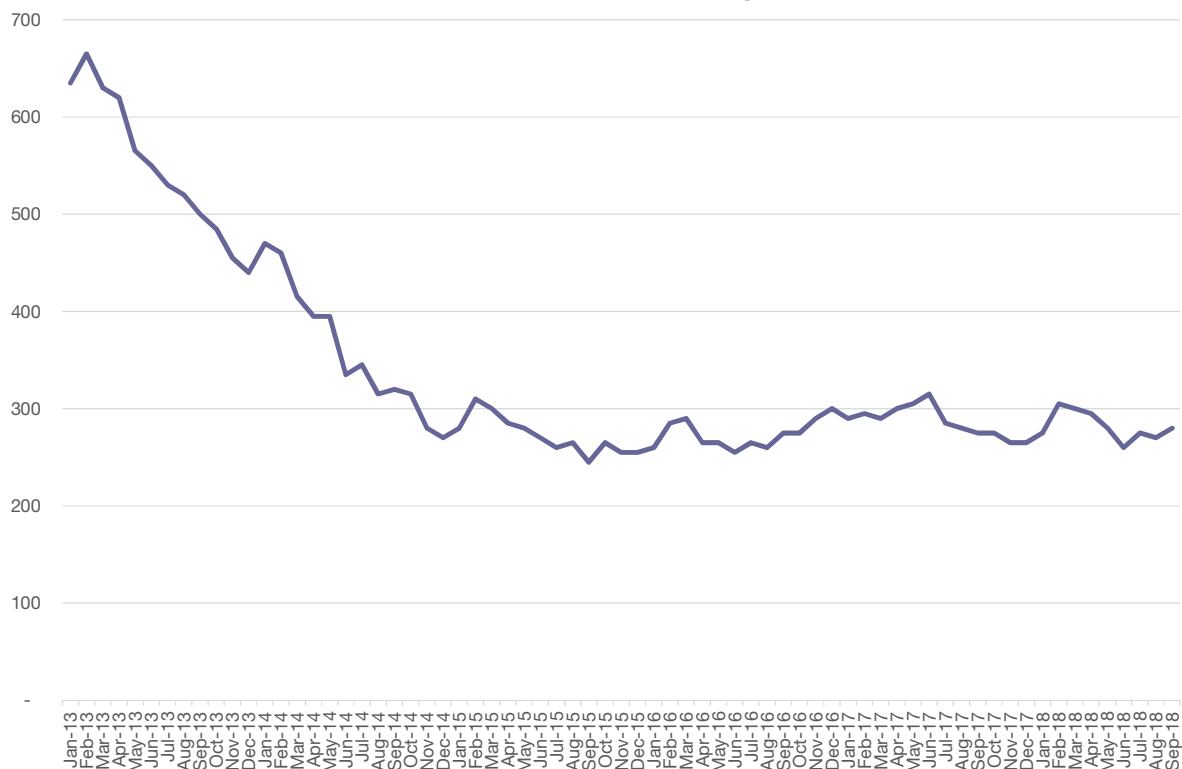
Source: DWP, 2018

Chart 3: Chiltern's claimant count over time, to September 2018



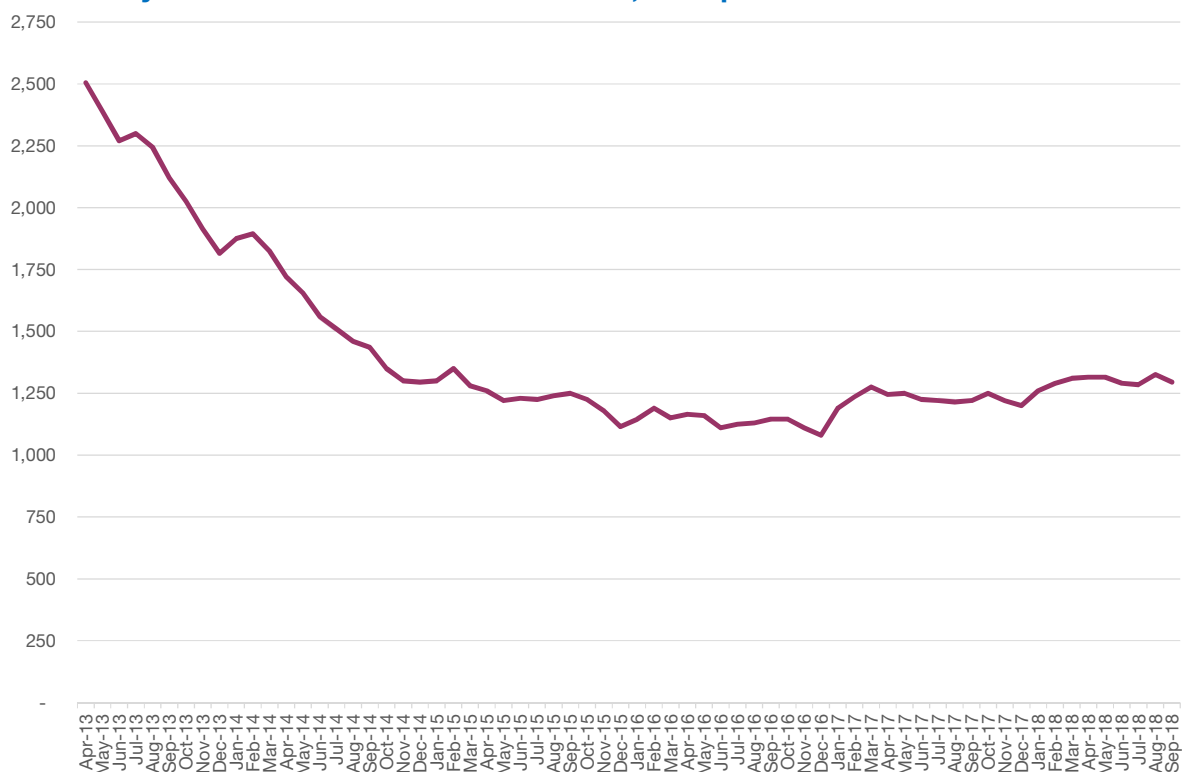
Source: DWP, 2018

Chart 4: South Bucks' claimant count over time, to September 2018



Source: DWP, 2018

Chart 5: Wycombe's claimant count over time, to September 2018



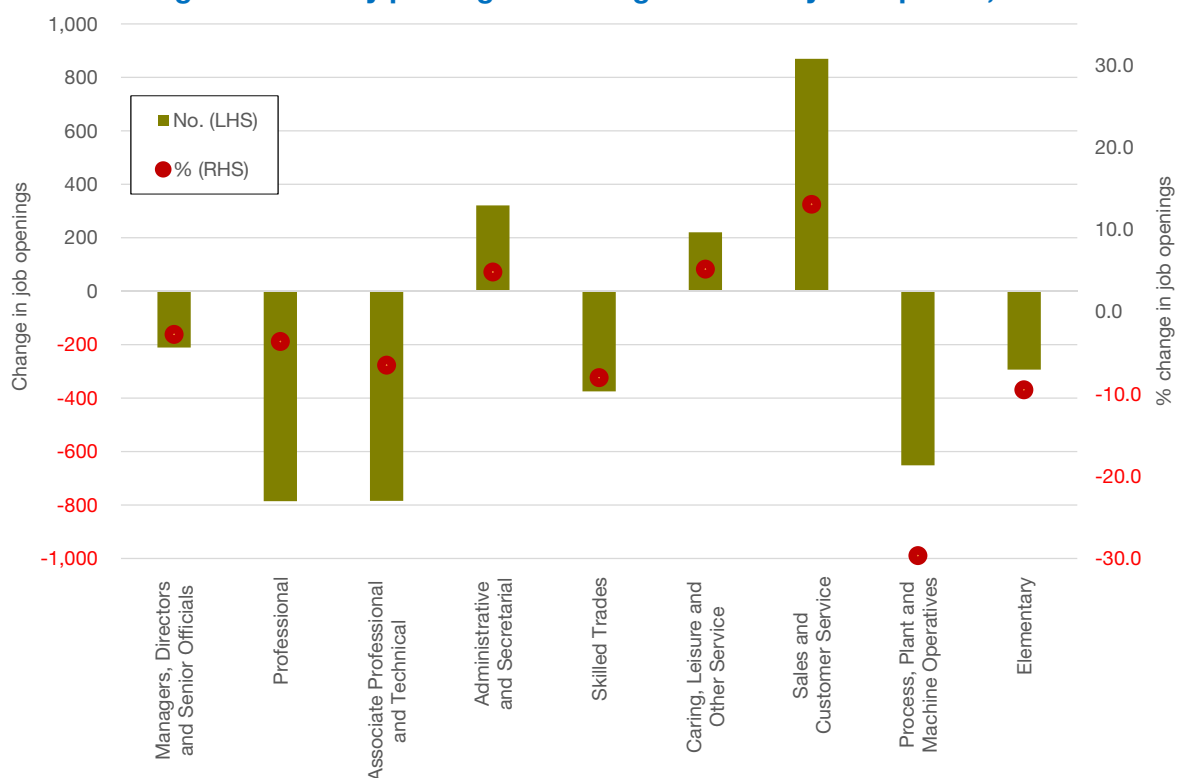
Source: DWP, 2018

Table 3: Claimant count by sought occupation (JSA only), September 2018

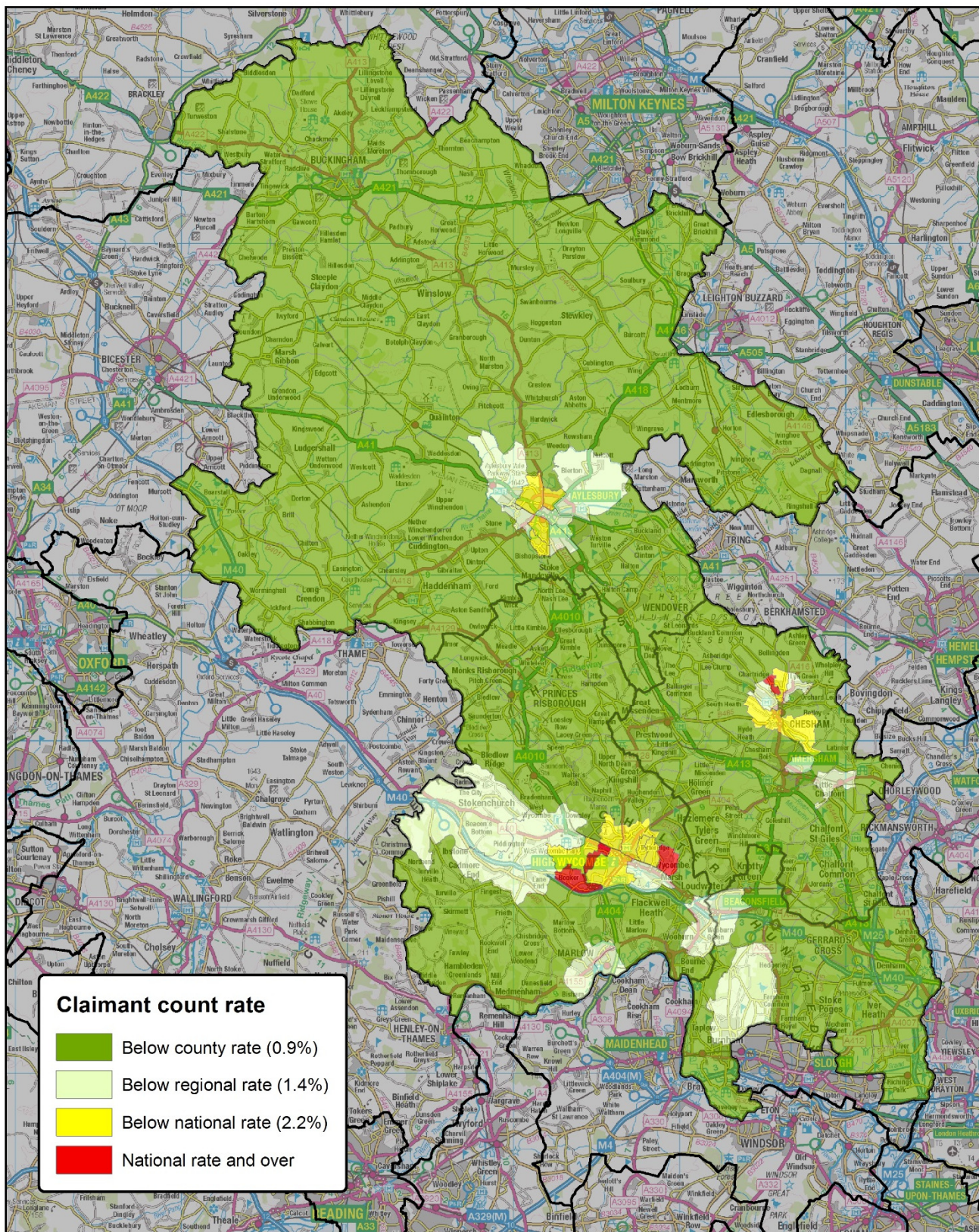
	SOCs 1-3			SOC 7 - Sales			SOC 9 - Elementary		
	No.	%	Rank	No.	%	Rank	No.	%	Rank
Aylesbury Vale	45	5.3	263	585	68.8	101	100	11.8	128
Chiltern	30	8.5	152	250	70.4	77	30	8.5	224
South Bucks	30	16.2	51	115	62.2	210	15	8.1	237
Wycombe	75	7.5	178	695	69.5	93	80	8.0	240
Buckinghamshire	185	7.7	11	1,640	68.3	8	225	9.4	11
BTVLEP	185	7.7	20	1,640	68.3	11	225	9.4	22
Coast to Capital	585	10.1	12	3,940	67.8	16	330	5.7	37
Enterprise M3	680	15.6	2	2,695	62.0	25	235	5.4	38
Hertfordshire	225	5.2	31	2,645	61.4	26	435	10.1	19
London	5,865	10.4	11	38,260	67.8	13	4,250	7.5	31
Oxfordshire	65	8.0	18	505	62.0	24	70	8.6	26
South East Midlands	640	5.6	28	7,295	64.2	21	1,535	13.5	8
Thames Valley Berkshire	155	7.9	19	1,035	52.7	37	185	9.4	21
South East	3,660	11.4	2	20,440	63.4	7	2,800	8.7	10
Great Britain	32,895	9.2		230,920	64.6		40,175	11.2	

Source: DWP, 2018

Chart 6: Changes in vacancy posting in Buckinghamshire by occupation, 2017-18



Source: Labour Insight, 2018



**Buckinghamshire Claimant Count Rate (JSA & Universal Credit) by Ward
September 2018**

This map is reproduced from Ordnance Survey material with the permission of Ordnance Survey on behalf of the controller of Her Majesty's Stationery Office. Crown Copyright. Unauthorised reproduction infringes Crown Copyright and may lead to prosecution or civil proceedings.
© Copyright Buckinghamshire County Council Licence No. 100021529 2010

Imagery © GeoPerspectives.com



Produced by BBF
16 October 2018

Scale: 1:300,000 at A4



**SUPPORTING
BUSINESSES
IN BUCKINGHAMSHIRE**



**YOUR LOCAL
GROWTH HUB**