

Buckinghamshire's Businesses, 2018

8 October 2018

There were 33,900 VAT / PAYE registered businesses in Buckinghamshire in 2018. Of these, 77.4 per cent employed fewer than five people, the highest share of any county council or Local Enterprise Partnership (LEP) area. Over the last year, the number of businesses in Buckinghamshire has fallen 0.8 per cent (275 businesses), failing to match the national rate of growth (0.1 per cent), ranking 23rd among the 27 county council areas and 29th among the 38 LEPs.

Table 1: Business population (local units) by number of employees, 2018

	0 to 4			5 to 9			Micro (0 to 9)			Small (10 to 49)			Medium (50 to 249)			Large (250+)		
	No.	%	Rank	No.	%	Rank	No.	%	Rank	No.	%	Rank	No.	%	Rank	No.	%	Rank
Aylesbury Vale	8,330	77.5	33	1,150	10.7	345	9,480	88.2	44	1,065	9.9	332	180	1.7	339	30	0.3	225
Chiltern	5,515	81.2	4	660	9.6	372	6,165	90.8	5	530	7.8	374	85	1.3	375	5	0.1	371
South Bucks	4,405	77.8	27	630	11.1	326	5,035	88.9	29	515	9.1	355	100	1.8	326	10	0.2	324
Wycombe	7,980	74.6	80	1,240	11.6	307	9,220	86.2	110	1,195	11.2	286	255	2.4	211	25	0.2	267
Buckinghamshire	26,230	77.4	1	3,665	10.8	27	29,895	88.2	1	3,305	9.7	27	625	1.8	27	75	0.2	23
BTVEP	26,230	77.4	1	3,665	10.8	38	29,895	88.2	1	3,305	9.7	38	625	1.8	38	75	0.2	38
Coast to Capital	77,440	74.6	6	12,295	11.8	32	89,735	86.4	4	11,520	11.1	34	2,245	2.2	34	330	0.3	27
Enterprise M3	67,890	74.8	4	10,550	11.7	34	78,240	86.4	5	9,955	11.0	35	2,065	2.3	29	280	0.3	28
GCGP	58,925	70.7	17	11,175	13.4	22	70,100	87.1	21	10,660	12.8	21	2,290	2.7	15	325	0.4	18
Herfordshire	52,805	75.9	2	7,820	11.2	35	60,625	87.1	2	7,165	10.3	37	1,550	2.2	32	235	0.3	26
London	432,325	76.1	3	62,300	11.0	36	494,625	87.1	3	88,575	10.3	36	12,735	2.2	31	2,265	0.4	17
Oxfordshire	25,835	70.8	15	4,740	13.0	25	30,570	83.8	23	4,790	13.1	18	965	2.6	20	150	0.4	15
SEMLEP	76,430	73.9	7	12,260	11.9	31	88,690	85.7	7	11,655	11.3	32	2,690	2.6	22	415	0.4	16
Thames Valley Berkshire	39,345	74.7	5	5,570	10.9	37	43,915	85.6	8	5,790	11.3	33	1,360	2.7	19	260	0.5	4
South East	341,715	73.1	2	57,120	12.2	10	398,835	85.4	2	55,365	11.9	10	11,340	2.4	10	1,620	0.3	9
Great Britain	2,198,125	71.2	-	400,155	13.1	-	2,598,280	84.3	-	394,895	12.6	-	79,800	2.6	-	12,070	0.4	-

Source: IDBR, ONS, 2018

Despite having the highest share of businesses in the smallest employment bands, 9.0 per cent of Buckinghamshire's businesses have turnovers of more than £1m, ranking 23rd among the 38 LEPs, while 16.2 per cent of Buckinghamshire's businesses have turnovers below £50,000, to rank 15th. Buckinghamshire businesses most commonly have turnovers between £50,000 and £100,000, with a third (33.4 per cent) of businesses falling into this band.

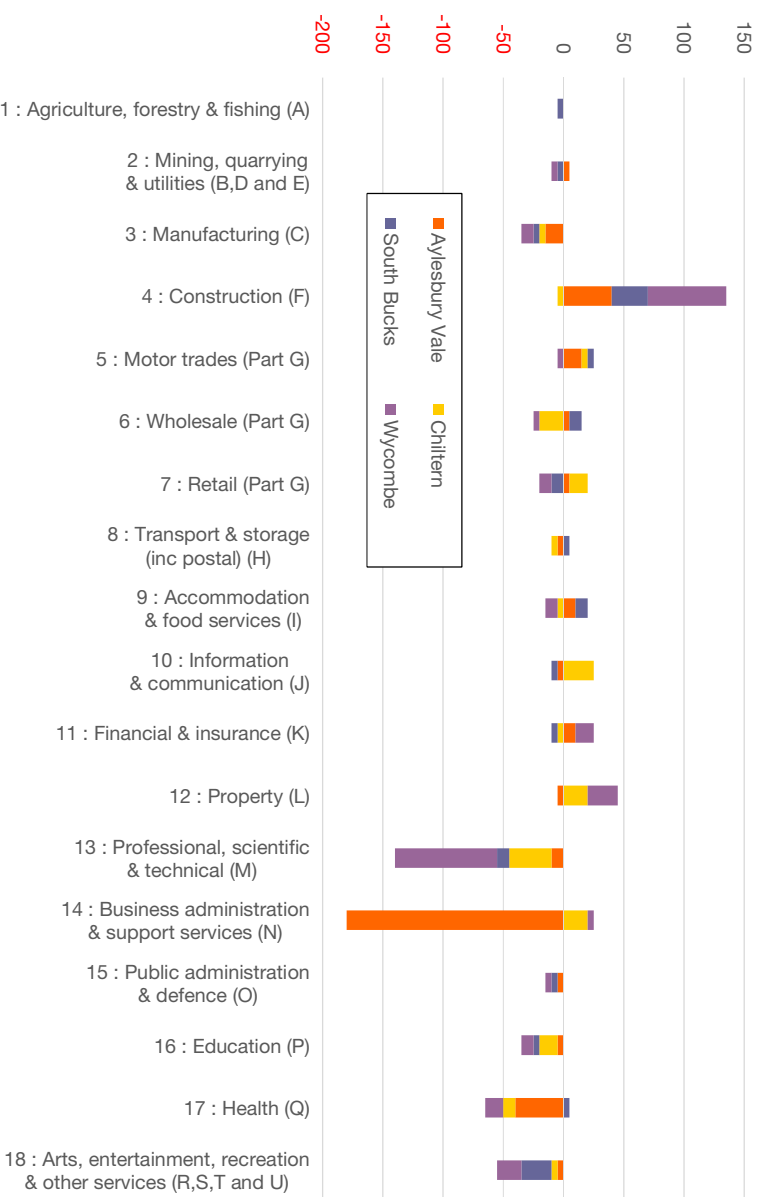
Table 2: Buckinghamshire's business population by turnover, 2018

	£0-£99,000			£50,000-£99,999			£100,000-£249,999			£250,000-£499,999			£500,000-£999,999			£1,000,000 and over		
	No.	%	Rank	No.	%	Rank	No.	%	Rank	No.	%	Rank	No.	%	Rank	No.	%	Rank
Aylesbury Vale	1,730	17.8	80	2,335	32.3	317	3,140	11.2	268	1,090	6.6	260	645	3.7	246	775	8.0	256
Chiltern	1,060	16.8	122	1,370	36.5	299	2,305	11.4	277	720	6.6	329	415	3.2	289	440	7.0	322
South Bucks	830	15.9	162	1,095	33.1	253	1,725	12.0	125	625	7.4	74	385	4.4	25	545	10.5	60
Wycombe	1,510	15.9	166	2,140	32.5	270	3,080	11.9	269	1,125	6.6	54	630	4.6	138	1,005	10.6	54
Buckinghamshire	5,130	16.7	16	6,940	33.4	25	10,250	11.6	24	3,560	6.8	15	2,075	4.0	15	2,765	9.0	14
BTVEP	5,130	16.7	15	6,940	33.4	33	10,250	11.6	32	3,560	6.8	24	2,075	4.0	21	2,765	9.0	23
Coast to Capital	13,525	14.9	29	21,120	34.4	22	31,180	12.4	28	11,275	6.8	13	6,200	3.7	34	7,275	8.0	35
Enterprise M3	13,665	15.6	25	19,640	33.5	29	29,295	11.9	23	10,370	7.0	14	6,140	4.2	15	8,230	9.4	13
GCGP	10,850	17.6	9	13,340	30.6	14	18,825	12.9	10	7,920	7.5	7	4,590	4.4	4	6,050	9.8	6
Herfordshire	9,245	15.0	38	15,385	32.8	32	20,255	11.8	35	7,165	6.5	27	4,035	3.9	28	5,680	9.2	18
London	73,780	14.6	33	119,800	33.0	31	167,250	11.6	25	59,715	6.9	13	35,150	4.2	7	50,485	10.0	3
Oxfordshire	5,330	17.1	13	6,700	31.5	16	9,840	12.8	7	4,010	7.5	17	2,345	4.1	10	2,980	9.6	9
South East Midlands	16,110	17.8	6	23,015	30.4	37	27,525	10.8	34	9,765	6.7	35	6,060	4.0	20	8,145	9.0	24
Thames Valley Berkshire	6,890	15.4	26	10,460	34.4	38	15,375	10.6	37	4,745	6.3	25	2,825	3.7	11	4,350	9.7	7
South East	62,330	15.4	8	92,600	33.6	9	135,775	12.1	8	49,065	7.0	6	28,370	4.0	6	36,415	9.0	6
Great Britain	414,110	15.9	-	607,970	32.0	-	831,160	12.4	-	321,025	7.1	-	184,855	4.1	-	237,200	9.1	-

Source: IDBR, ONS, 2018

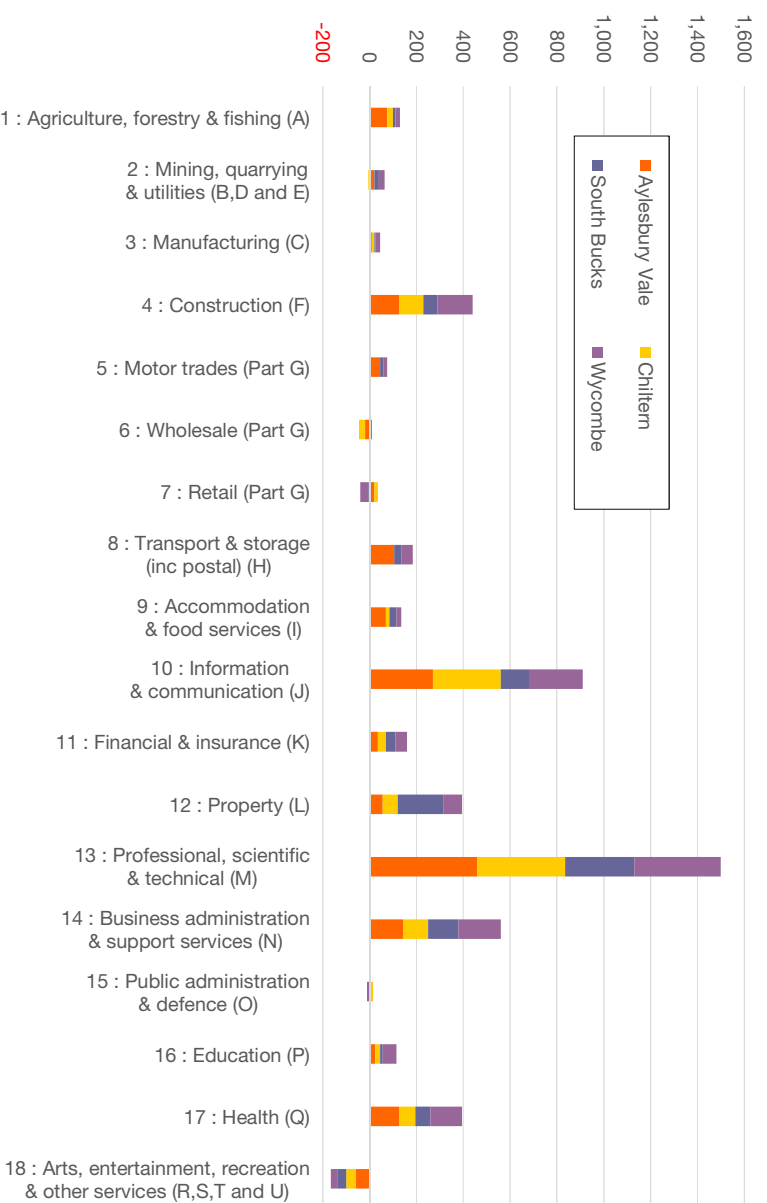
The professional, scientific and technical sector is the largest in Buckinghamshire, accounting for 21.0 per cent of all businesses in the county, slightly down on t 2017's figures but still the highest share of any LEP outside London. Management consultancies now account for 45.6 per cent of businesses in the sector and for 9.6 per cent of all businesses, the highest share of any LEP or county council area. Construction businesses showed the strongest growth in the last year in all sectors, increasing by 130 businesses to stand at 3,720 businesses or 11.1 per cent of the total. Since 2010, Buckinghamshire's professional scientific and technical sector has grown by 1,500 businesses accounting for 30.6 per cent of all growth.

Chart 1: Change in business population by broad industry group by district, 2017-18



Source: IDBR, ONS, 2018

Chart 2: Change in business population by broad industry group by district, 2010-18



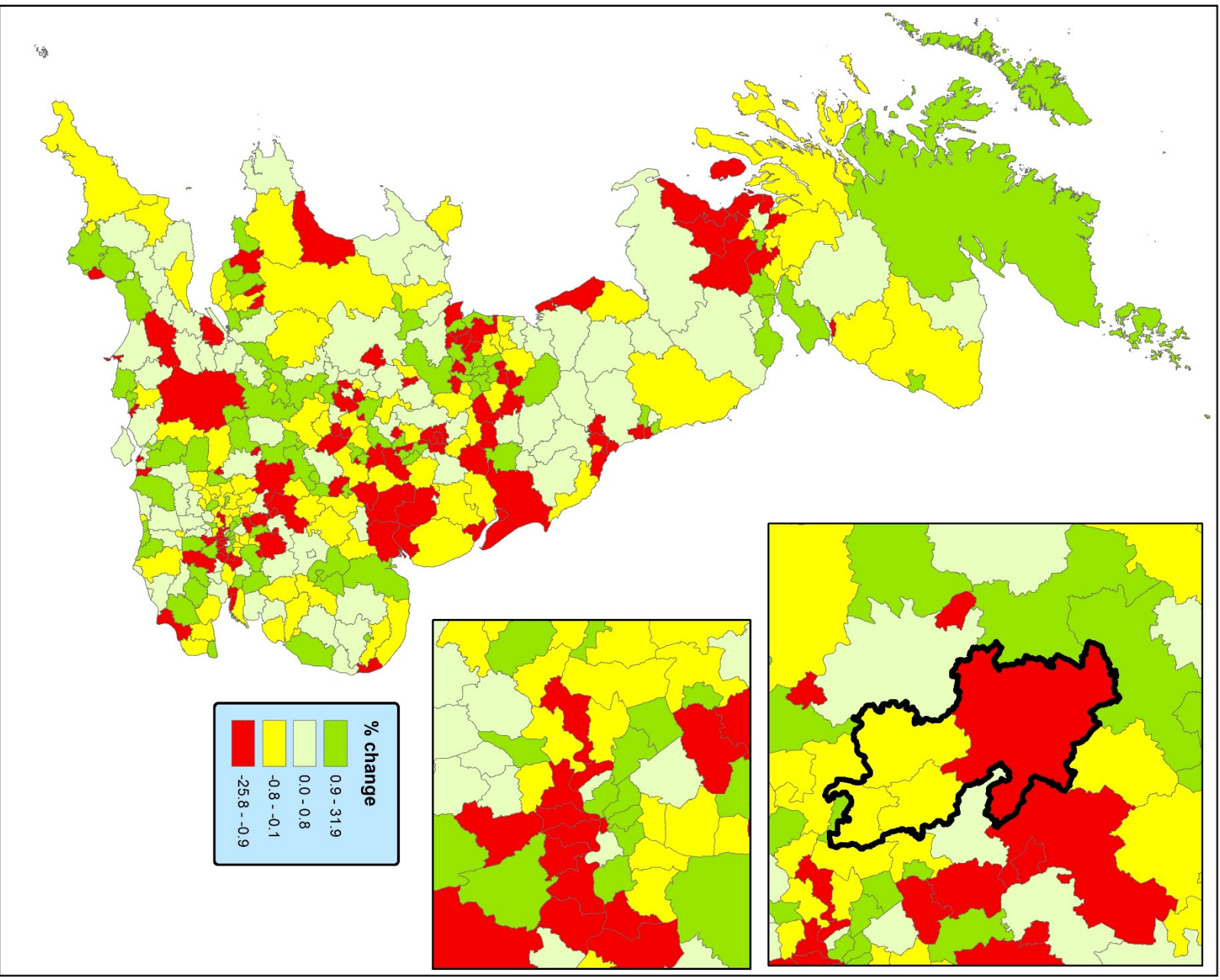
Source: IDBR, ONS, 2018

Table 3: Businesses in Buckinghamshire by broad industry group, 2018

	1 : Agriculture, forestry & fishing (A)			2 : Mining, quarrying & utilities (B,D and E)			3 : Manufacturing (C)			4 : Construction (F)			5 : Motor trades (Part G)			6 : Wholesale (Part G)			7 : Retail (Part G)			8 : Transport & storage (inc postal) (H)			9 : Accommodation & food services (I)		
	No.	%	Rank	No.	%	Rank	No.	%	Rank	No.	%	Rank	No.	%	Rank	No.	%	Rank	No.	%	Rank	No.	%	Rank	No.	%	Rank
Aylesbury Vale	725	6.7	110	50	0.5	293	530	4.9	196	1,220	11.4	188	345	3.2	169	445	4.1	141	690	6.4	360	355	3.3	214	440	4.1	363
Chiltern	140	2.1	209	15	0.2	372	225	3.3	327	725	10.7	235	145	2.1	322	235	3.5	261	480	7.1	340	115	1.7	364	230	3.4	379
South Bucks	75	1.3	233	40	0.7	133	155	2.7	355	585	10.3	258	130	2.3	312	215	3.8	191	360	6.4	363	175	3.1	240	265	4.7	327
Wycombe	205	1.9	215	50	0.5	289	540	5.0	188	1,235	11.5	176	290	2.7	255	510	4.8	61	795	7.4	313	290	2.7	276	425	4.0	373
Buckinghamshire	1,145	3.4	22	150	0.4	25	1,450	4.3	24	3,770	11.1	21	915	2.7	25	1,410	4.2	9	2,320	6.8	27	935	2.8	22	1,365	4.0	27
BTVLEP	1,145	3.4	25	150	0.4	38	1,450	4.3	31	3,770	11.1	19	915	2.7	32	1,410	4.2	12	2,320	6.8	38	935	2.8	33	1,365	4.0	38
Coast to Capital	2,095	2.0	30	515	0.5	34	3,960	3.8	36	12,750	12.3	5	2,450	2.4	37	3,780	3.6	27	9,720	9.4	20	2,565	2.5	37	6,090	5.9	24
Enterprise M3	2,220	2.5	27	430	0.5	37	3,490	3.9	35	9,600	10.6	23	2,330	2.6	33	3,250	3.6	28	6,880	7.6	35	2,520	2.8	32	4,340	4.8	36
GCGP	5,735	6.9	10	525	0.6	19	4,435	5.3	20	9,610	11.5	16	2,735	3.3	15	3,640	4.4	10	6,860	8.2	30	4,005	4.8	14	4,650	5.6	31
Hertfordshire	850	1.2	33	375	0.5	29	2,800	4.0	34	8,850	12.7	4	1,710	2.5	36	3,065	4.4	8	5,235	7.5	36	2,965	4.3	18	3,550	5.1	33
London	755	0.1	38	2,715	0.5	36	14,570	2.6	38	53,685	9.4	36	7,265	1.3	38	21,240	3.7	25	47,535	8.4	29	14,755	2.6	36	32,235	5.7	27
Oxfordshire	1,725	4.7	18	200	0.5	26	1,525	4.2	33	3,820	10.5	26	990	2.7	31	1,260	3.5	30	2,960	8.1	32	960	2.6	35	2,055	5.6	28
South East Midlands	3,780	3.7	24	510	0.5	35	5,130	5.0	22	12,265	11.9	10	3,520	3.4	11	4,270	4.1	16	8,235	8.0	33	6,990	6.8	5	4,985	4.8	34
TV Berkshire	595	1.2	34	325	0.6	17	1,735	3.4	37	4,855	9.5	35	1,275	2.5	35	2,130	4.2	15	3,715	7.2	37	1,975	3.8	22	2,360	4.6	37
South East	12,320	2.6	11	2,455	0.5	11	19,880	4.3	11	55,715	11.9	2	12,675	2.7	10	17,805	3.8	7	40,625	8.7	10	14,860	3.2	10	26,250	5.6	10
England	103,345	3.8	-	15,850	0.6	-	125,970	4.7	-	296,785	11.0	-	73,690	2.7	-	107,240	4.0	-	254,005	9.4	-	111,465	4.1	-	166,415	6.2	-
United Kingdom	153,400	4.9	-	20,075	0.6	-	147,230	4.7	-	341,915	10.9	-	86,220	2.8	-	122,370	3.9	-	299,415	9.6	-	126,370	4.0	-	198,740	6.3	-

	10 : Information & communication (J)			11 : Financial & insurance (K)			12 : Property (L)			13 : Professional, scientific & technical (M)			14 : Business administration & support services (N)			15 : Public administration & defence (O)			16 : Education (P)			17 : Health (Q)			18 : Arts, entertainment, recreation & other services (R,S,T and U)		
	No.	%	Rank	No.	%	Rank	No.	%	Rank	No.	%	Rank	No.	%	Rank	No.	%	Rank	No.	%	Rank	No.	%	Rank	No.	%	Rank
Aylesbury Vale	985	9.2	74	190	1.8	244	345	3.2	180	2,050	19.1	63	870	8.1	183	90	0.8	173	250	2.3	213	515	4.8	249	650	6.0	236
Chiltern	845	12.5	33	160	2.4	92	260	3.8	66	1,705	25.1	12	560	8.3	165	30	0.4	307	160	2.4	196	285	4.2	318	465	6.9	108
South Bucks	620	11.0	50	125	2.2	122	430	7.6	3	1,210	21.4	31	530	9.4	53	15	0.3	352	110	1.9	345	235	4.2	321	385	6.8	113
Wycombe	1,230	11.5	47	220	2.1	161	350	3.3	165	2,140	20.0	48	935	8.7	101	50	0.5	300	265	2.5	152	475	4.4	298	695	6.5	159
Buckinghamshire	3,680	10.9	2	700	2.1	11	1,380	4.1	1	7,105	21.0	2	2,895	8.5	8	185	0.5	25	785	2.3	17	1,515	4.5	24	2,200	6.5	9
BTVLEP	3,680	10.9	4	700	2.1	20	1,380	4.1	2	7,105	21.0	3	2,895	8.5	13	185	0.5	31	785	2.3	25	1,515	4.5	36	2,200	6.5	12
Coast to Capital	10,250	9.9	6	2,310	2.2	16	3,545	3.4	14	18,755	18.1	9	9,345	9.0	8	550	0.5	33	2,425	2.3	22	5,635	5.4	17	7,095	6.8	6
Enterprise M3	10,405	11.5	3	2,400	2.7	6	3,270	3.6	8	19,010	21.0	2	8,040	8.9	10	490	0.5	32	2,095	2.3	26	3,875	4.3	38	5,890	6.5	11
GCGP	5,610	6.7	13	1,615	1.9	27	2,770	3.3	18	12,530	15.0	16	6,610	7.9	22	870	1.0	11	2,165	2.6	8	3,905	4.7	31	5,095	6.1	25
Hertfordshire	7,465	10.7	5	1,660	2.4	12	2,590	3.7	5	13,170	18.9	7	6,200	8.9	9	315	0.5	35	1,540	2.2	33	3,165	4.5	35	4,070	5.8	34
London	70,600	12.4	2	17,670	3.1	3	26,475	4.7	1	122,255	21.5	1	58,065	10.2	4	1,820	0.3	38	11,155	2.0	37	25,860	4.6	34	39,540	7.0	5
Oxfordshire	3,145	8.6	8	660	1.8	32	1,265	3.5	11	6,975	19.1	6	3,110	8.5	14	335	0.9	12	1,100	3.0	1	1,820	5.0	26	2,550	7.0	4
South East Midlands	8,745	8.5	9	1,970	1.9	28	3,075	3.0	32	15,735	15.2	14	9,690	9.4	5	725	0.7	24	2,475	2.4	19	4,875	4.7	30	6,480	6.3	16
TV Berkshire	8,210	16.0	1	1,105	2.2	19	1,460	2.8	35	10,190	19.9	5	4,800	9.4	6	210	0.4	37	1,140	2.2	32	2,220	4.3	37	3,025	5.9	32
South East	45,970	9.8	2	10,425	2.2	4	15,670	3.4	5	83,970	18.0	2	40,970	8.8	4	2,860	0.6	11	11,175	2.4	8	23,475	5.0	10	30,060	6.4	6
England	209,965	7.8	-	66,815	2.5	-	97,385	3.6	-	435,760	16.2	-	235,035	8.7	-	18,710	0.7	-	62,855	2.3	-	142,990	5.3	-	172,925	6.4	-
United Kingdom	228,080	7.3	-	75,915	2.4	-	109,660	3.5	-	488,645	15.6	-	264,505	8.4	-	24,180	0.8	-	74,635	2.4	-	168,505	5.4	-	203,410	6.5	-

Source: IDBR, ONS, 2018



This map is reproduced from Ordnance Survey material with the permission of Ordnance Survey on behalf of the controller of Her Majesty's Stationery Office. It is reproduced by permission of the Controller of Her Majesty's Stationery Office. Ordnance Survey (OS) is a registered trademark. Copyright and map data provided by Ordnance Survey (OS).
 © Copyright Buckinghamshire County Council Licence No. 10021529 2010
 Imagery © Gettyimages.com

% change in business population (local units), 2017-18
IDBR, 2018

Produced by BGF
 8 October 2018

Scale: 1:4,500,000 at A4

0 20 40 80 120 160
 Kilometers

